

**SK330**  
SK330-10

**SK350<sup>LC</sup>**  
SK350LC-10

SK330-10/SK350LC-10

**KOBELCO**

**SK330 SK350<sup>LC</sup>**



Note: This catalog may contain attachments and optional equipment that are not available in your area. And it may contain photographs of machines with specifications that differ from those of machines sold in your areas. Please consult your nearest KOBELCO distributor for those items you require. Due to our policy of continuous product improvements all designs and specifications are subject to change without advance notice. Copyright by **KOBELCO CONSTRUCTION MACHINERY CO., LTD.** No part of this catalog may be reproduced in any manner without notice.

**KOBELCO CONSTRUCTION MACHINERY CO., LTD.**

5-15, Kitashinagawa 5-chome, Shinagawa-ku, Tokyo 141-8626 JAPAN  
Tel: +81 (0) 3-5789-2146 Fax: +81 (0) 3-5789-2135  
[www.kobelco-kenki.co.jp/english\\_index.html](http://www.kobelco-kenki.co.jp/english_index.html)

Inquiries To:

SK250/SK260LC-10-ANZ-101-160301NF

**We Save You Fuel**  
Achieving a Low-Carbon Society



# Power Meets Efficiency

**24%**  
Higher fuel efficiency  
means  
"Efficiency"

Compared to S-mode on the SK330LC-8

Increase in  
productivity  
means  
"Power"

To urban centers, and to mines around the world. Kobelco's all-out innovation brings you durable earth-friendly construction machinery that's equal to any task, at sites all over the planet. Increased power and even greater fuel economy bring higher efficiency to any project. Kobelco SK330/SK350LC machines are also more durable than ever, able to withstand the rigors of the toughest job sites. It all adds up to new levels of value that are a step ahead of the times. While focusing on the global environment of the future, Kobelco offers next-generation productivity to meet the need for lower life cycle costs and exceed the expectations of customers the world over.



## SK330 SK350<sub>LC</sub>



# Evolution Continues, with Improved Fuel Efficiency.

**24%**  
Higher fuel efficiency means "Efficiency"

The new arm interflow system more efficiently controls hydraulic fluid flow, and significant reduction of in-line resistance and pressure loss boosts fuel efficiency by about 24%\*. The electronic-control common-rail engine features high-pressure fuel injection and multiple injection with improved precision. It is fitted with an EGR cooler which greatly reduces PM and NOx emissions, and meets TIERIII Standards.

\* Compared to H-mode on the SK330-8

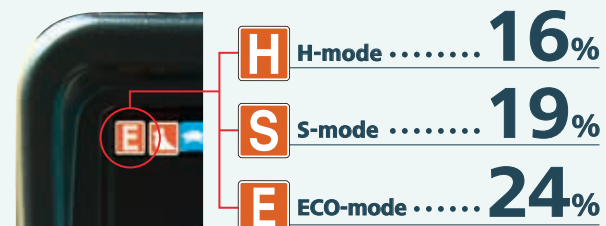


## In Pursuit of Improved Fuel Efficiency

### Operation Mode

Fuel consumption is lower in ECO-mode/S-mode/ H-mode in comparison with the previous model (Generation 8).

■ Compared to previous models

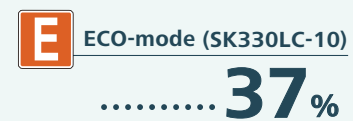


Values are approximate improvement rate.

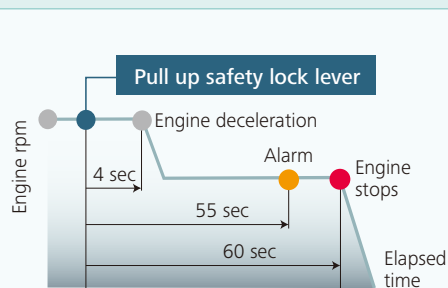
### Always and Forever. Yesterday, Today, and Tomorrow. Obsessed with Fuel Efficiency.

Over the past 10 years, Kobelco has achieved an average reduction of about 37% in fuel consumption. And we vow to continue to lead in fuel efficiency.

■ Compared to SK210LC-6 model (2006)



Value is approximate improvement rate.



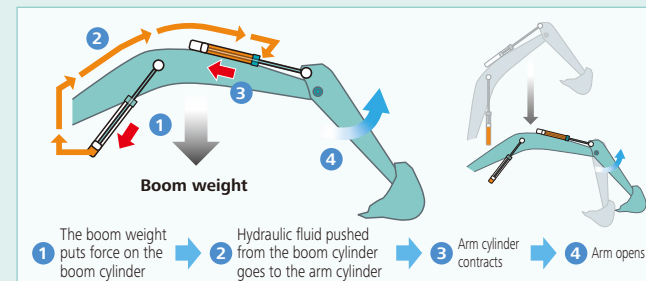
### AIS (Auto Idle Stop)

If the boarding/disembarking lever is left up, the engine will stop automatically. This eliminates wasteful idling during standby, saving fuel and reducing CO<sub>2</sub> emissions as well.

## Hydraulic System: Revolutionary Technology Saves Fuel

### Arm Interflow System **NEW**

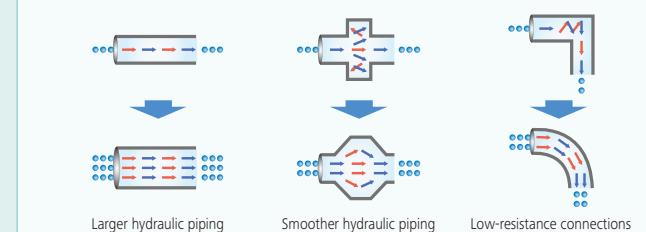
When lowering the boom, this system uses the downward force generated by the boom's weight to push fluid to the shovel arm. This greatly reduces the need to apply power from outside the system.



### Hydraulic circuit reduces energy loss

We have made every effort to enhance fuel efficiency by minimizing hydraulic pressure resistance, improving the hydraulic line layout to control friction resistance loss and minimizing valve resistance.

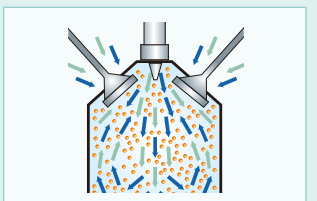
Improved hydraulic piping is an effective means of reducing pressure loss.



## Pursuing maximum fuel efficiency

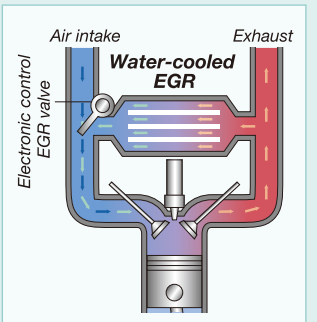
### Common rail system

High-pressure injection atomizes the fuel, and more precise injection improves combustion efficiency. This also contributes to better fuel economy.



### EGR cooler

While ensuring sufficient oxygen for combustion, cooled emission gases are mixed with the intake air and recirculated into the engine. This reduces oxygen content and lowers combustion temperature.





# More Power and Higher Efficiency.

The highly efficient hydraulic system minimizes fuel consumption while maximizing power. With nimble movement and ample digging power, this excavator promises to improve your job productivity.

## Superior Digging Force

■ Max. Bucket Digging Force

Normal: **222kN**  
With power boost: **244kN**

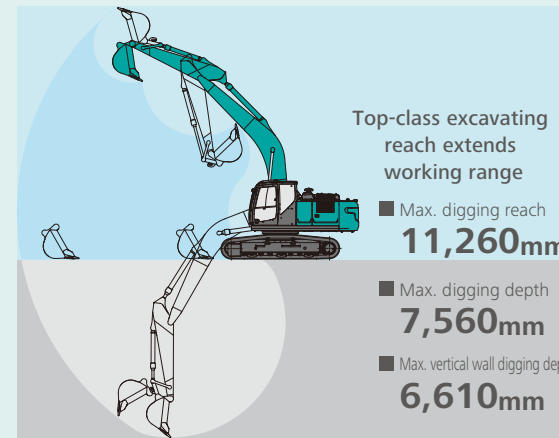
■ Max. Arm Crowding Force

Normal: **163kN**  
With power boost: **180kN**

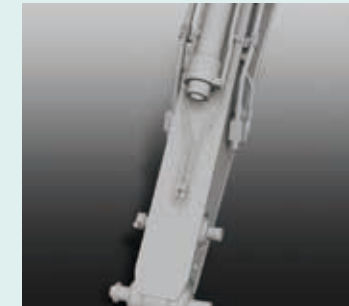
\*Values are for HD arm (3.30m)



## Get More Done Faster with Superior Operability



## Piping for Quick Hitch



A quick hitch hydraulic line, which speeds up attachment changes, is fitted as standard.

## A Light Touch on the Lever Means Smoother, Less Tiring Work NEW



It takes **38%** less effort to work the operation lever, which reduces fatigue over long working hours or continued operations.

## Top Class Traveling Force

Powerful traveling force and pulling force deliver plenty of speed when climbing slopes or negotiating bad roads, and the agility to change direction swiftly and smoothly.

■ Drawbar Pulling Force: **333kN**



## Operator-friendly Features Include Controls that Are Easy to See, Easy to Use



### Multi-Display in Color

Brilliant colors and graphic displays are easy to recognize on the LCD multi-display in the console. The display shows fuel consumption, maintenance intervals, and more.

- 1 Analog gauge provides an intuitive reading of fuel level and engine water temperature
- 2 Green indicator light shows low fuel consumption during operation
- 3 Fuel consumption/Switch indicator for rear camera images
- 4 Digging mode switch
- 5 Monitor display switch

### One-Touch Attachment Mode Switch

A simple flick of a switch converts the hydraulic circuit and flow amount to match attachment changes. Icons help the operator to confirm the proper configuration at a glance.

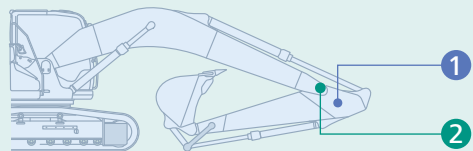
<p>14:39</p>	<p>CONSUMPTION</p> <p>6.7h</p>	<p>MAINTENANCE</p> <table border="1"> <tr><td>ENGINE OIL</td><td>500</td><td>495</td></tr> <tr><td>FUEL FILTER</td><td>500</td><td>495</td></tr> <tr><td>HYD. FILTER</td><td>1000</td><td>995</td></tr> <tr><td>HYD. OIL</td><td>5000</td><td>4995</td></tr> </table>	ENGINE OIL	500	495	FUEL FILTER	500	495	HYD. FILTER	1000	995	HYD. OIL	5000	4995
ENGINE OIL	500	495												
FUEL FILTER	500	495												
HYD. FILTER	1000	995												
HYD. OIL	5000	4995												
<p>PM accumulation/AdBlue accumulation display</p>	<p>Fuel consumption</p>	<p>Maintenance</p>												
<p>16:25</p> <p>FLOW RATE 130 L/min</p> <p>PRESSURE A 30 MPa</p>	<p>16:25</p> <p>FLOW RATE 260 L/min</p> <p>PRESSURE A 25 MPa</p>													
<p>Breaker mode</p>	<p>Nibbler mode</p>	<p>Rearview monitoring</p>												



# Increased Power, with Enhanced Durability to Maintain the Machine's Value

Increase in  
productivity  
means  
"Power"

Structural design increases strength,  
while eliminating hydraulic problems.  
Enhanced durability takes  
productivity to a new level.

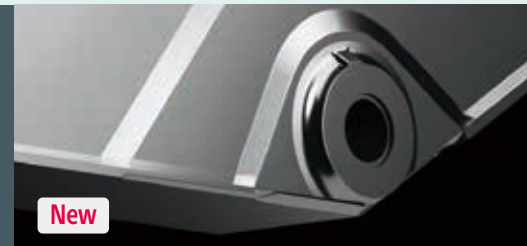


## Built to Operate in Tough Working Environments

The attachment has been reinforced to handle a higher work volume, with greater power and excellent durability that can withstand demanding work conditions.

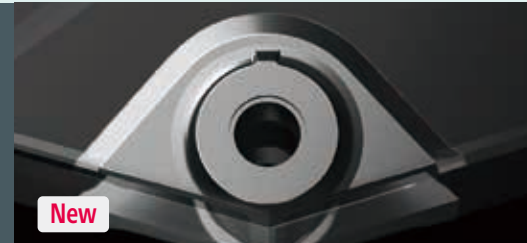
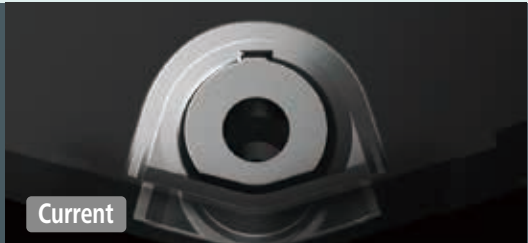
### 1 Enlarged Reinforcement of the Arm Foot

HD: Base plate thickness has been increased.



### 2 Modified Foot Boss Shape

The arm foot boss shape has been modified and improved to distribute stress, delivering more strength for tasks like digging next to a wall.



## Improved Filtration System Reliability

Clean, contaminant-free fuel and hydraulic fluid are essential to stable performance. The improved filtration systems reduce the risk of mechanical trouble and enhance longevity and durability.

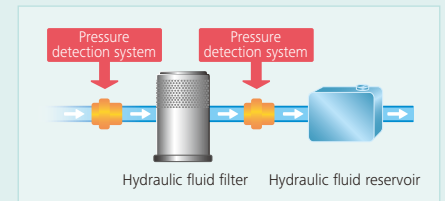
### Hydraulic Fluid Filter

Recognized as the best in the industry, our super-fine filter separates out even the smallest particles. New cover prevents contamination when changing filters.



### Hydraulic Fluid Filter Clog Detector

Pressure sensors at the inlet and outlet of the hydraulic fluid filter monitor differences in pressure to determine the degree of clogging. If the difference in pressure exceeds a predetermined level, a warning appears on the multi-display, so any contamination can be removed from the filter before it reaches the hydraulic fluid reservoir.



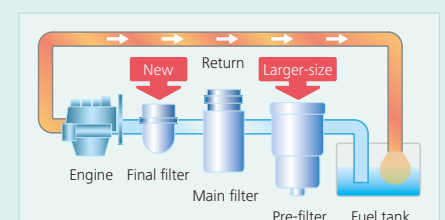
### Metal mesh cover air cleaner

Metal mesh cover ensures strength and durability.



### Fuel filter

The pre-filter with built-in water-separator has 1.6 times more filter area compared to the previous models, with a new final stage to maximize filtering performance.





# Comfortable Cab Is Now Safer than Ever.

A work environment that is quieter and more comfortable. A cab that puts the operator first is key to improved safety.



The picture is optional air suspension seat.



## Comfort

### Super-Airtight Cab



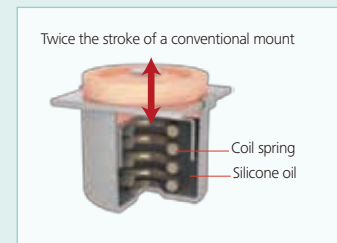
The high level of air-tightness keeps dust out of the cab.

### Quiet Inside

The high level of air-tightness ensures a quiet, comfortable cabin interior.

### Low Vibration

Coil springs absorb small vibrations, and high suspension mounts filled with silicone oil reduce heavy vibration. The long stroke achieved by this system provides excellent protection from vibration.



### Air Conditioner Register behind the Seat NEW



The large air-conditioner has registers on the back pillars that blow from behind and to the right and left of the operator's seat. They can be adjusted to put a direct flow of cool/warm air on the operator, which means a more comfortable operating environment.

### More Comfortable Seat Means Higher Productivity



Seat suspension absorbs vibration



Seat recliner can be pushed back flat



Double slides allow adjustment for optimum comfort

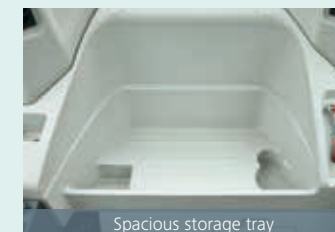
### Interior Equipment Adds to Comfort and Convenience



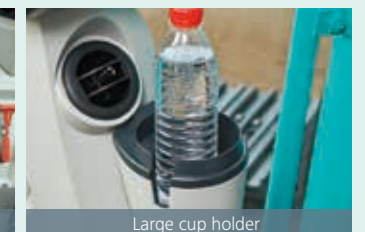
Automatic AM/FM radio



USB pin/12V power outlet



Spacious storage tray



Large cup holder



### Large Cab Is Easy to Get in and out of

The expanded cab provides plenty of room for a large door, more headroom and smoother entry and exit.

## Safety

### ROPS Cab

ROPS (Roll-Over-Protective Structure)-compliant cab clears ISO standards (ISO-12117-2: 2008) and ensures greater safety for the operator should the machine tip over.



TOP Guard is fitted as standard.

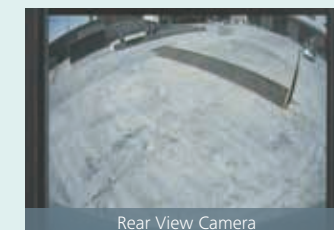
### Broad View Liberates the Operator

The front window features one large piece of glass without a center pillar on the right side for a wide, unobstructed view.

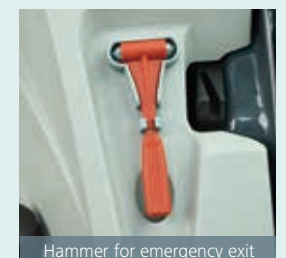
### Expanded Field of View for Greater Safety



Rearview mirrors left and right



Rear View Camera



Hammer for emergency exit

Greater safety assured by rearview mirrors on left and right.

A rear view camera is installed as standard to simplify checking for safety behind the machine. The picture appears on the color monitor.







# Efficient Maintenance Keeps the Machine in Peak Operating Condition.



MAINTENANCE			
	INTERVAL	REMAINING TIME	EXCHANGE DAY
ENGINE OIL	500 H	495 H	--/--/--
FUEL FILTER	500 H	495 H	--/--/--
HYD. FILTER	1000 H	995 H	--/--/--
HYD. OIL	5000 H	4995 H	--/--/--

6.7h

## Machine Information Display Function

- Displays only the maintenance information that's needed, when it's needed
- Self-diagnostic function provides early-warning detection and display of electrical system malfunctions
- Service-diagnostic function makes it easier to check the status of the machine
- Record function of previous breakdowns including irregular and transient malfunction

Examples of displaying maintenance information

## Easy, On-the-Spot Maintenance NEW

There is ample space in the engine compartment for a mechanic to do maintenance work inside. The distance between steps is lower so entry and exit is easier. And the mechanic can work in comfort, without contortions or unnatural body positions. Finally, the hood is lighter and easier to raise and lower.



Generous space for maintenance work

Step/Hand rail

Double-element air cleaner

## More Efficient Maintenance Inside the Cab



Easy-access fuse box

Air conditioner filters

More finely differentiated fuses make it easier to locate malfunctions.

Internal and external air conditioner filters can be easily removed without tools for cleaning.

## Easy Cleaning



Crawler frame

Detachable two-piece floor mat

Engine oil pan

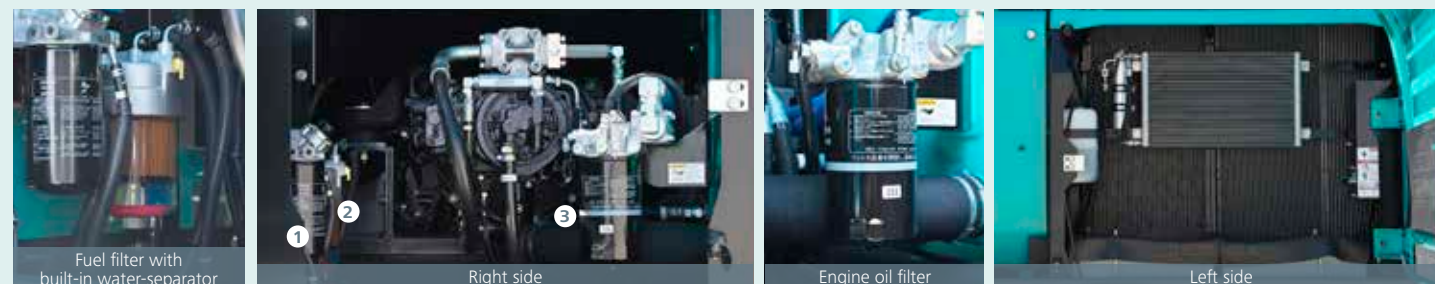
Special crawler frame design is easily cleaned of mud.

Detachable two-piece floor mat with handles for easy removal. A floor drain is located under floor mat.

Engine oil pan equipped with drain valve.

## Maintenance Work, Daily Checks, Etc., Can Be Done from Ground Level

The layout allows for easy access from the ground for many daily checks and regular maintenance tasks.



Fuel filter with built-in water-separator

Right side

Engine oil filter

Left side

- 1 Fuel filter
- 2 Fuel filter with built-in water-separator
- 3 Engine oil filter

Laid out for easy access to radiator and cooling system elements

Long-life hydraulic oil:  
**5,000** hours

## Long-Interval Maintenance

Long-life hydraulic oil reduces cost and labor.

Replacement cycle:  
**1,000** hours

## Highly Durable Super-fine Filter

The high-capacity hydraulic oil filter incorporates glass fiber with superior cleaning power and durability.





## Engine

Model	J08ETM-KSDL
Type	Direct injection, water-cooled, 4-cycle diesel engine with turbocharger, intercooler
No. of cylinders	6
Bore and stroke	112 mm x 130 mm
Displacement	7.684 L
Rated power output	197 kW/2,100 min <sup>-1</sup> (ISO 9249)
	209 kW/2,100 min <sup>-1</sup> (ISO 14396)
Max. torque	969 N·m/1,600 min <sup>-1</sup> (ISO 9249)
	998 N·m/1,600 min <sup>-1</sup> (ISO 14396)

## Hydraulic System

Pump	
Type	Two variable displacement pumps + 1 gear pump
Max. discharge flow	2 x 294 L/min, 1 x 21 L/min, 1 x 44L/min(optional gear pump)
Relief valve setting	
Boom, arm and bucket	34.3 MPa {350 kgf/cm <sup>2</sup> }
Power Boost	37.8 MPa {385 kgf/cm <sup>2</sup> }
Travel circuit	34.3 MPa {350 kgf/cm <sup>2</sup> }
Swing circuit	29.0 MPa {296 kgf/cm <sup>2</sup> }
Control circuit	5.0 MPa {50 kgf/cm <sup>2</sup> }
Pilot control pump	Gear type
Main control valve	8-spool
Oil cooler	Air cooled type

## Swing System

Swing motor	Axial-piston motor
Brake	Hydraulic; locking automatically when the swing control lever is in neutral position
Parking brake	Oil disc brake, hydraulic operated automatically
Swing speed	10 min <sup>-1</sup> {rpm}
Tail swing radius	3,600 mm
Min. front swing radius	4,310 mm

## Attachments

Backhoe bucket and combination

Use	Backhoe bucket				
	Normal digging				
Bucket capacity	Heaped (ISO7451)	m <sup>3</sup>	1.20	1.40	1.60
	Struck (ISO7451)	m <sup>3</sup>	0.84	1.00	1.20
Opening width	With side cutter	mm	1,240	1,420	1,570
	Without side cutter	mm	1,110	1,390	1,450
No. of teeth			4	5	5
Bucket weight		kg	930	1,080	1,140
Combination	2.60 m short arm		○	○	◎
	3.30 m standard arm		○	◎	△
	4.15 m long arm		○	△	×

◎ Standard ○ Recommend △ Loading only × Not recommended

## Travel System

Travel motors	2 x axial-piston, two-step motors
Travel brakes	Hydraulic brake per motor
Parking brakes	Oil disc brake per motor
Travel shoes	45 (48) each side
Travel speed	5.8/3.6 km/h
Drawbar pulling force	333 kN (ISO 7464)
Gradeability	70% {35°}

( ) show SK350LC

## Cab & Control

**Cab**  
All-weather, sound-suppressed steel cab mounted on the high suspension mounts filled with silicone oil and equipped with a heavy, insulated floor mat.

**Control**  
Two hand levers and two foot pedals for travel  
Two hand levers for excavating and swing  
Electric rotary-type engine throttle

## Boom, Arm & Bucket

Boom cylinders	140 mm x 1,550 mm
Arm cylinder	170 mm x 1,788 mm
Bucket cylinder	150 mm x 1,193 mm

## Refilling Capacities & Lubrications

Fuel tank	503 L
Cooling system	35 L
Engine oil	28.5 L
Travel reduction gear	2 x 8.0 L
Swing reduction gear	7.4 L
Hydraulic oil tank	245 L tank oil level
	410 L hydraulic system

## Working Ranges

Unit: m

Range	Arm	6.50 m		
		Short 2.6 m	Standard 3.3 m	Long 4.15 m
a- Max. digging reach		10.61	11.26	11.97
b- Max. digging reach at ground level		10.4	11.06	11.79
c- Max. digging depth		6.86	7.56	8.41
d- Max. digging height		10.26	10.58	10.7
e- Max. dumping clearance		7.06	7.37	7.53
f- Min. dumping clearance		3.32	2.62	1.77
g- Max. vertical wall digging depth		5.84	6.61	7.15
h- Min. swing radius		4.45	4.31	4.43
i- Horizontal digging stroke at ground level		4.21	5.82	7.21
j- Digging depth for 2.4 m (8') flat bottom		6.67	7.4	8.27
Bucket capacity ISO heaped m <sup>3</sup>		1.6	1.4	1.2

## Digging Force (ISO 6015)

Unit: kN (tf)

Arm length	Short 2.6 m	Standard 3.3 m	Long 4.15 m
Bucket digging force	221	222	221
	244*	244*	243*
Arm crowding force	205	163	140
	225*	180*	154*

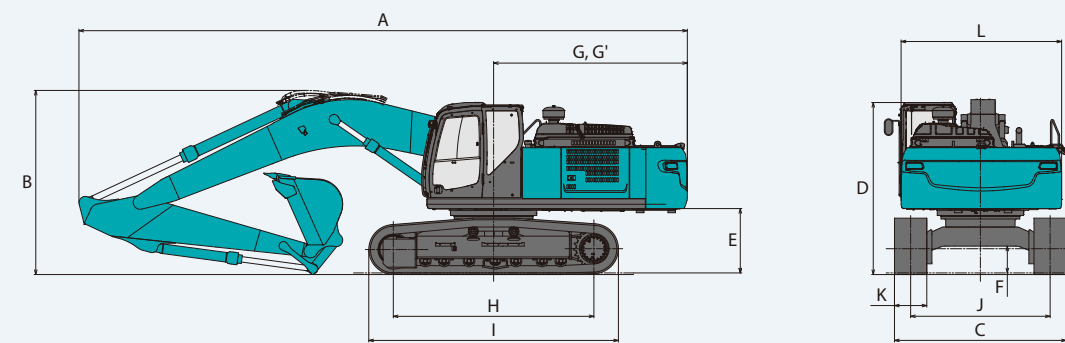
\*Power Boost engaged.

## Dimensions

Arm length	Short 2.6 m	Standard 3.3 m	Long 4.15 m
A Overall length	11,380	11,300	11,330
B Overall height (to top of boom)	3,680	3,420	3,590
C Overall width of crawler		3,190	
D Overall height (to top of cab)		3,200	
E Ground clearance of rear end*		1,190	
F Ground clearance*		500	
G Tail swing radius		3,600	

Unit: mm		
G'	Distance from center of swing to rear end	3,600
H	Tumbler distance	SK330 3,720
		SK350LC 4,050
I	Overall length of crawler	SK330 4,630
		SK350LC 4,960
J	Track gauge	2,590
K	Shoe width	600
L	Overall width of upperstructure	2,980

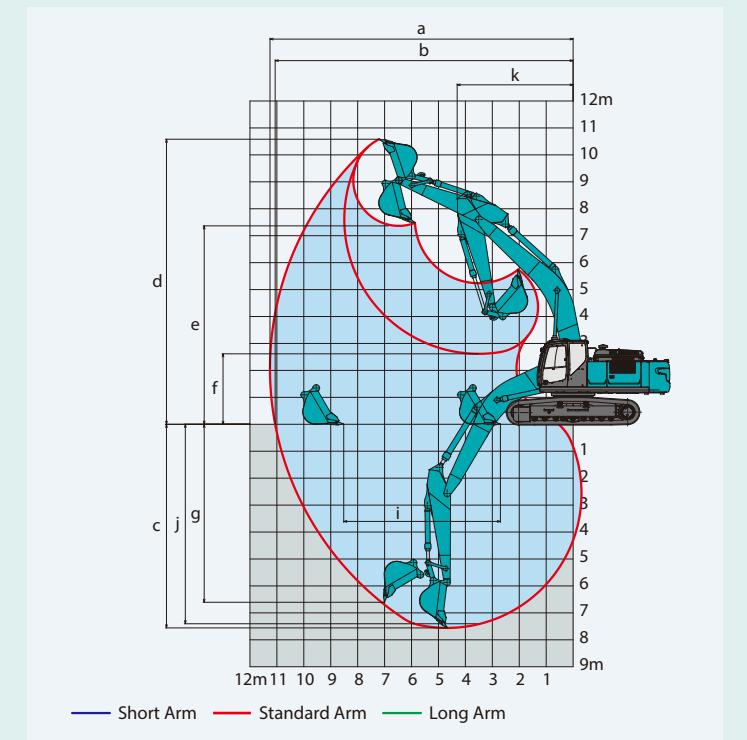
\*Without including height of shoe



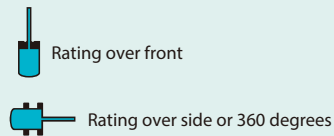
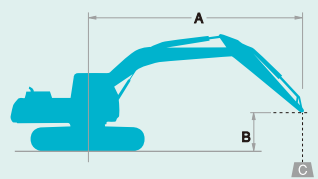
## Operating Weight & Ground Pressure

In standard trim, with standard boom, 3.3 m arm, and 1.4 m<sup>3</sup> ISO heaped bucket

Shaped	Triple grouser shoes (even height)				
	SK330	SK350LC	700	800	
Shoe width	mm	600	3,190	3,290	3,390
Overall width of crawler	mm	3,190	3,290	3,390	3,390
	mm	3,190	3,290	3,390	3,390
Ground pressure	SK330 kPa (kgf/cm <sup>2</sup> )	71	63	56	52
	SK350LC kPa (kgf/cm <sup>2</sup> )	67	59	52	52
Operating weight	SK330 kg	35,200	36,300	36,700	36,700
	SK350LC kg	35,900	36,800	37,200	37,200







A: Reach from swing centerline to arm top  
 B: Arm top height above/below ground  
 C: Lifting capacities in Kilograms  
 Bucket: Without bucket  
 Relief valve setting: 34.3 MPa (350 kgf/cm<sup>2</sup>)

SK330		Boom: 6.5 m Arm: 3.3 m, Bucket: without Shoe: 600 mm															
A	B	1.5 m		3.0 m		4.5 m		6.0 m		7.5 m		9.0 m		At Max. Reach		Radius	
		Rating over front	Rating over side or 360 degrees	Rating over front	Rating over side or 360 degrees	Rating over front	Rating over side or 360 degrees	Rating over front	Rating over side or 360 degrees	Rating over front	Rating over side or 360 degrees	Rating over front	Rating over side or 360 degrees	Rating over front	Rating over side or 360 degrees		
9.0m	kg														*5,750	*5,750	6.56m
7.5m	kg									*6,910	*6,910				*5,260	*5,260	7.86m
6.0m	kg									*7,010	*7,010				*5,080	*5,080	8.71m
4.5m	kg									*7,490	*7,490				*5,080	*5,080	9.25m
3.0m	kg									*8,610	*8,610				*5,080	*5,080	9.25m
1.5m	kg									*13,360	*13,360				*5,250	*4,900	9.52m
G.L.	kg									*15,280	13,700				*5,580	4,770	9.54m
-1.5m	kg									*13,950	*13,950				*6,150	4,850	9.33m
-3.0m	kg									*15,590	13,110				*7,100	5,180	8.85m
-4.5m	kg									*10,960	9,200				*7,560	5,910	8.07m
	kg									*8,750	6,760				*7,450	*7,450	6.88m

SK330		Boom: 6.5 m Arm: 4.15 m, Bucket: without Shoe: 600 mm															
A	B	1.5 m		3.0 m		4.5 m		6.0 m		7.5 m		9.0 m		At Max. Reach		Radius	
		Rating over front	Rating over side or 360 degrees	Rating over front	Rating over side or 360 degrees	Rating over front	Rating over side or 360 degrees	Rating over front	Rating over side or 360 degrees	Rating over front	Rating over side or 360 degrees	Rating over front	Rating over side or 360 degrees	Rating over front	Rating over side or 360 degrees		
9.0m	kg														*4,280	*4,280	7.56m
7.5m	kg														*3,990	*3,990	8.71m
6.0m	kg														*6,070	*6,070	9.49m
4.5m	kg														*6,620	*6,620	9.98m
3.0m	kg														*6,130	5,530	9.98m
1.5m	kg														*10,040	9,230	10.25m
G.L.	kg														*13,890	*13,890	10.25m
-1.5m	kg														*9,780	*9,780	10.05m
-3.0m	kg														*15,210	13,080	9.62m
-4.5m	kg														*10,950	8,700	8.91m
-6.0m	kg														*8,630	6,380	7.85m

SK330		Boom: 6.5 m Arm: 2.6 m, Bucket: without Shoe: 600 mm														
A	B	3.0 m		4.5 m		6.0 m		7.5 m		At Max. Reach		Radius				
		Rating over front	Rating over side or 360 degrees	Rating over front	Rating over side or 360 degrees	Rating over front	Rating over side or 360 degrees	Rating over front	Rating over side or 360 degrees	Rating over front	Rating over side or 360 degrees					
7.5m	kg											*7,760	*7,760	7.06m		
6.0m	kg													*8,310	*8,310	8.00m
4.5m	kg													*7,610	7,460	8.00m
3.0m	kg													*9,260	*9,260	8.58m
1.5m	kg													*11,930	*11,930	8.58m
G.L.	kg													*10,390	9,460	8.87m
-1.5m	kg													*8,500	6,900	8.87m
-3.0m	kg													*11,280	8,950	8.89m
-4.5m	kg													*9,980	8,980	8.89m

SK350LC		Boom: 6.5 m Arm: 3.3 m, Bucket: without Shoe: 600 mm															
A	B	1.5 m		3.0 m		4.5 m		6.0 m		7.5 m		9.0 m		At Max. Reach		Radius	
		Rating over front	Rating over side or 360 degrees	Rating over front	Rating over side or 360 degrees	Rating over front	Rating over side or 360 degrees	Rating over front	Rating over side or 360 degrees	Rating over front	Rating over side or 360 degrees	Rating over front	Rating over side or 360 degrees	Rating over front	Rating over side or 360 degrees		
9.0m	kg														*5,750	*5,750	6.56m
7.5m	kg														*6,910	*6,910	7.86m
6.0m	kg														*7,010	*7,010	8.71m
4.5m	kg														*7,490	*7,490	9.25m
3.0m	kg														*8,610	*8,610	9.25m
1.5m	kg														*13,360	*13,360	9.52m
G.L.	kg														*15,280	13,930	9.54m
-1.5m	kg														*13,950	*13,950	9.33m
-3.0m	kg														*15,590	13,340	8.85m
-4.5m	kg														*10,960	9,360	8.07m

SK350LC		Boom: 6.5 m Arm: 4.15 m, Bucket: without Shoe: 600 mm																			
A	B	1.5 m		3.0 m		4.5 m		6.0 m		7.5 m		9.0 m		At Max. Reach		Radius					
		Rating over front	Rating over side or 360 degrees	Rating over front	Rating over side or 360 degrees	Rating over front	Rating over side or 360 degrees	Rating over front	Rating over side or 360 degrees	Rating over front	Rating over side or 360 degrees	Rating over front	Rating over side or 360 degrees	Rating over front	Rating over side or 360 degrees						
9.0m	kg																*4,560	*4,560	7.56m		
7.5m	kg																		*4,280	*4,280	8.71m
6.0m	kg																		*3,990	*3,990	9.49m
4.5m	kg																		*6,070	*6,070	9.98m
3.0m	kg																		*5,900	5,770	9.98m
1.5m	kg																		*6,620	*6,620	10.23m
G.L.	kg																		*6,130	5,620	10.23m
-1.5m	kg																		*9,780	*9,780	10.25m
-3.0m	kg																		*15,210	13,310	10.05m
-4.5m	kg																		*10,950	8,860	9.62m
-6.0m	kg																		*8,630	6,490	8.91m

SK350LC		Boom: 6.5 m Arm: 2.6 m, Bucket: without Shoe: 600 mm														
A	B	3.0 m		4.5 m		6.0 m		7.5 m		At Max. Reach		Radius				
		Rating over front	Rating over side or 360 degrees	Rating over front	Rating over side or 360 degrees	Rating over front	Rating over side or 360 degrees	Rating over front	Rating over side or 360 degrees	Rating over front	Rating over side or 360 degrees					
7.5m	kg											*7,760	*7,760	7.06m		
6.0m	kg													*8,310	*8,310	8.00m
4.5m	kg													*7,610	7,580	8.00m
3.0m	kg													*9,260	*9,260	8.58m
1.5m	kg													*11,930	*11,930	8.58m
G.L.	kg													*10,390	9,620	8.87m
-1.5m	kg													*8,500	7,020	8.87m
-3.0m	kg													*11,280	9,110	8.89m
-4.5m	kg													*9,980	6,740	8.89m

## STANDARD EQUIPMENT

### ENGINE

- Engine, HINO J08ETM-KSDL, diesel engine with turbocharger and intercooler
- Automatic engine deceleration
- Auto Idle Stop (AIS)
- Batteries (2 x 12V - 96Ah)
- Starting motor (24V - 5 kW), 60 amp alternator
- Automatic engine shut-down for low engine oil pressure
- Engine oil pan drain cock
- Double element air cleaner

### CONTROL

- Working mode selector (H-mode, S-mode and ECO-mode)
- Power Boost

### SWING SYSTEM & TRAVEL SYSTEM

- Swing rebound prevention system
- Straight propel system
- Two-speed travel with automatic shift down
- Sealed & lubricated track links
- Grease-type track adjusters
- Automatic swing brake

### HYDRAULIC

- Arm regeneration system
- Auto warm up system
- Aluminum hydraulic oil cooler

### MIRRORS & LIGHTS

- Two rear view mirrors
- Three front working lights (2 for boom, one for right storage box)

### CAB & CONTROL

- Two control levers, pilot-operated
- Tow eyes
- Horn, electric
- Cab light (interior)
- Luggage tray
- Large cup holder
- Detachable two-piece floor mat
- Headrest
- Handrails
- Intermittent windshield wiper with double-spray washer
- Skylight
- Tinted safety glass
- Pull-up type front window and removable lower front window
- Easy-to-read multi-display color monitor
- Automatic air conditioner
- Emergency escape hammer
- Suspension seat
- Radio, AM/FM stereo with speaker
- TOP guard
- Boom & Arm safety valve
- Geoscan
- Travel alarm
- Quick hitch piping

## OPTIONAL EQUIPMENT

- Various optional arms
- Wide range of shoes
- Additional track guide
- Multi control valve
- Extra hydraulic circuit

- Two cab lights
- Air suspension seat
- Rain visor (may interfere with bucket action)
- Cab guard
- Refueling pump

Note: Standard and optional equipment may vary. Consult your KOBELCO dealer for specifics.

### Notes:

- Do not attempt to lift or hold any load that is greater than these lift capacities at their specified lift point radius and heights. Weight of all accessories must be deducted from the above lift capacities.
- Lift capacities are based on machine standing on level, firm, and uniform ground. User must make allowance for job conditions such as soft or uneven ground, out of level conditions, side loads, sudden stopping of loads, hazardous conditions, experience of personnel, etc.
- Arm top defined as lift point.
- The above lifting capacities are in compliance with ISO 10567. They do not exceed 87% of hydraulic lifting capacity or 75% of tipping load. Lifting capacities marked with an asterisk (\*) are limited by hydraulic capacity rather than tipping load.
- Operator should be fully acquainted with the Operator's and Maintenance Instructions before operating this machine. Rules for safe operation of equipment should be adhered to at all times.